

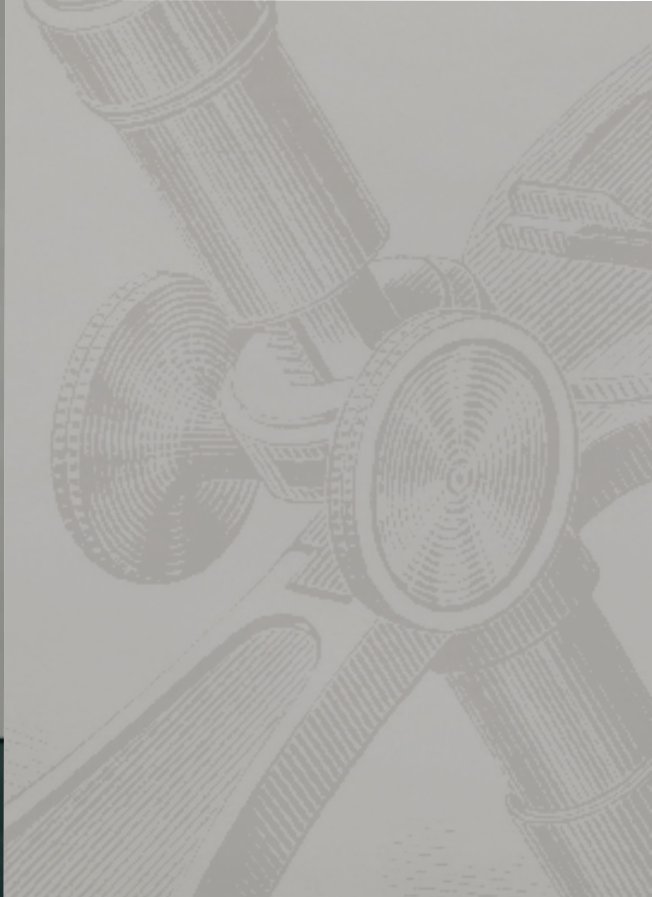


St George's
University of London

A team for life

UNDERGRADUATE PROSPECTUS 2019







We may be small, but by George, we're mighty!

sgul.ac.uk

    #JoinStGeorges



2 WELCOME TO ST GEORGE'S
4 WHY US
6 SOCIAL LIFE
8 OUR HISTORY
10 ALUMNI
12 FACILITIES
16 STUDENTS' UNION
18 A ST GEORGE'S EDUCATION
20 BIOMEDICAL SCIENCE (BSC HONS)
24 BIOMEDICAL SCIENCE (MSCI)
28 CLINICAL PHARMACOLOGY (BSC HONS)
32 CARDIAC PHYSIOLOGY
(HEALTHCARE SCIENCE BSC HONS) /
RESPIRATORY AND SLEEP PHYSIOLOGY
(HEALTHCARE SCIENCE BSC HONS)
36 DIAGNOSTIC RADIOGRAPHY (BSC HONS)
40 MEDICINE (GRADUATE ENTRY) (MBBS4)
44 MEDICINE (MBBS5)
48 OCCUPATIONAL THERAPY (BSC HONS)
52 PARAMEDIC SCIENCE (BSC HONS)
56 PHYSIOTHERAPY (BSC HONS)
60 THERAPEUTIC RADIOGRAPHY (BSC HONS)
64 IN PARTNERSHIP
66 THE ESSENTIALS
68 ACCOMMODATION
70 APPLYING
72 VISIT US



Welcome
to St George's

WELCOME TO ST GEORGE'S



IN CHOOSING THE RIGHT ROUTE for your university career, you'll be considering what you want from the journey and the destination you hope to reach. I am delighted by your interest in St George's and encourage you to explore the great opportunities on offer here.

Our students are motivated by making a difference, and the transformational education we provide equips them to pursue their chosen career. When a student myself, I was inspired most when applying the theoretical knowledge I'd gained, and the ethos here at St George's offers the same stimulating experience.

A St George's education encompasses excellent teaching and hands-on training, and the chance to learn from staff who are leaders in their fields. We are all part of a community which is addressing society's needs. Whether investigating antimicrobial resistance or finding solutions to the long-term management of chronic illnesses, St George's is tackling today's challenges head-on.

Student life is enhanced by the vibrancy and realism of our shared campus with St George's Hospital, which may be familiar to you through the '24 Hours in A&E' television series. Whether performing in plays or concerts, or supporting community initiatives, our students also have a lot of fun.

I hope that you will enjoy learning more about St George's through the stories shared by our students. If you are driven to make an impact, St George's will guide you along the path to do so.

PROFESSOR JENNY HIGHAM
PRINCIPAL
ST GEORGE'S, UNIVERSITY OF LONDON

WHY US

HEALTH AND SCIENCE IS ALL WE DO

Our campus is unique. We don't just specialise in healthcare, science and medicine. We are also the only university embedded in a hospital, sharing a site with St George's Hospital.

Every member of staff and every student is committed to making a difference and is driven by similar interests. That's why we continue to play a huge and pivotal role in the world of healthcare.

So we might be small, but by George, we're mighty!

Our alumni community is full of extraordinary people; pioneers who have made massive contributions to society through groundbreaking research and significant medical breakthroughs. People such as Edward Jenner, the creator of the smallpox vaccine, and Patrick Steptoe CBE, the founder of fertility treatment.

Our past has shaped modern medicine and today's healthcare. Our future is even more exciting. We hope you'll be a part of it.

*We share
a campus
with one of
the largest
teaching
hospitals in
the UK*



WHY US

AT ST GEORGE'S you are surrounded by healthcare. You are taught by staff who are clinicians who offer insights into how theory is applied. From day one you are immersed in the clinical environment, which keeps you focused on the end goal. When you walk through the corridors, you remember what it's all for.

NAOMI (YEAR 1)
PHYSIOTHERAPY (BSC HONS)
ST GEORGE'S, UNIVERSITY OF LONDON



LEARN ALONGSIDE EXPERIENCED PROFESSIONALS

For a small university, our teaching staff are big on experience. Many of them hold clinical roles in the NHS or private clinics, or have previously worked as healthcare professionals. They provide world-class learning and their experiences in the real world will hugely enrich your development.

THAT LONDON FEELING

Our students love making the most of the cultural and educational opportunities in nearby central London, enjoying quick and easy access to theatres, museums, markets, galleries, shopping and sporting venues.

Closer to home, our local neighbourhood of Tooting is a thriving, cultural melting pot and a fantastic place to live, with fresh food markets and a range of exciting places to meet, eat and enjoy great bargain shopping.

LIVING IN TOOTING

There are plenty of opportunities available for you to broaden your experience and develop skills outside your learning.

Tooting is a thriving, dynamic hub in South West London encompassing independent cafés, artisan pubs and bars and a renowned market. Famous for its fantastic South Asian food, Tooting draws heavily from its multicultural population to give you tastes and flavours from all over the world – all on your doorstep – making it the perfect location for the full London student experience.

We value our strong links with the community and you can get involved with a range of voluntary service initiatives – from honing your first aid skills with St John Ambulance, supporting ill children through our Teddy Bear Hospital, fundraising for biomedical research or supporting blood and marrow donation campaigns.

THE SURROUNDING AREA

Close by are the buzzing areas of Brixton, Clapham, Balham and Wimbledon. Each has its unique charm with Clapham offering quaint and unique pubs, Brixton a lively nightlife, Balham a plethora of independent shops and Wimbledon numerous wide-open, green spaces.

GOING TO CENTRAL LONDON

We are a short walk from Tooting Broadway Tube station which means that central London and all it has to offer is only a 20-minute journey away. There are two night buses that run all night, and the Tube is now open all night on Fridays and Saturdays.

THE MOST AMAZING thing about London is that there is always something new to experience – whether it's food, things to do or places to visit. The convenience of being able to get around so easily, by living somewhere so well-connected, is something I appreciate a lot, having previously lived in the countryside. And of course, meeting new people and making friends from different parts of the world has been a great experience.

JOZEL (YEAR 2)
GRADUATE ENTRY MEDICINE (MBBS4)
ST GEORGE'S, UNIVERSITY OF LONDON





TOOTING FACTS

Tooting Lido is the largest open-air pool in the British Isles. Brad Pitt counts as one of its visitors. Scenes from the film 'Snatch' were filmed there.

There are more than 15 places of worship in Tooting, servicing four major religions.

Merton Abbey Mills, a short bus ride away, is host to Abbeyfest, a summer festival of theatre, music and comedy.

OUR HISTORY

JOHN HUNTER

Studied and worked at St George's, pioneered an experimental basis for surgical practice and became known as the 'father of modern surgery'.

1733

PATRICK CHRISTOPHER STEPTOE

Completed his medical studies at St George's and began his career in obstetrics and gynaecology here. He went on to pioneer fertility treatment, developing the technique of in vitro fertilisation (IVF) alongside biologist and physiologist Robert Edwards. Patrick was elected a Fellow of the Royal Society in March 1987 and awarded the Gold Medal of the British Medical Association.

1930

1749

EDWARD JENNER

The 'father of immunology' is an alumnus too. By creating the smallpox vaccine, he is said to have saved more lives than anyone else in history.

1827

HENRY GRAY

Renowned surgeon, trained at St George's and went on to write 'Gray's Anatomy', a text, now in its 41st edition, that is still on every medic's reading list.

By George!

OUR HISTORY

PROFESSOR HANNAH VALANTINE (MBBS)

Graduated from St George's Hospital Medical School. In 2014 she joined the National Institute of Health in Washington DC as the organisation's first Chief Officer for Scientific Workforce Diversity.

1978

DR EDWARD COATS (MBBS)

Keeping the pioneering spirit alive, Ed joined TV presenter Ben Fogle and Olympic rower James Cracknell when they journeyed to the South Pole in 2009. Currently he is juggling an obstetric career with a series of 'extreme classroom projects' in the High Arctic and in Africa. He has filmed programmes for the BBC that challenge the labels children with behavioural difficulties have, demonstrating that children labelled 'unteachable' can be taught with the right approach.

2005

1950

1984

1994

2014

MR FRANK CHINEGWUNDOH (MBBS)

After leaving St George's, Frank went on to become consultant urological surgeon at Barts Health NHS Trust and Harley Street, London, and has been awarded an MBE for his service to the NHS in the Queen's Birthday Honours list.

DR LUCY MATHEN (MBBS)

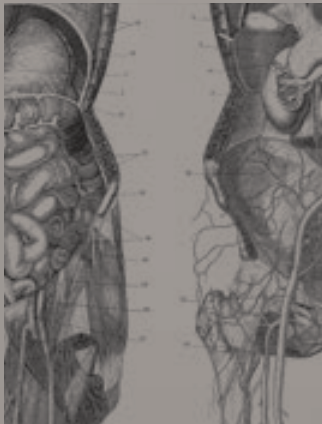
Lucy was a reporter on the BBC's 'Newsround' until an interview with a doctor in Afghanistan inspired her to pursue a career in medicine. After graduating, she specialised in ophthalmology and her charity, Second Sight, aims to eliminate cataract blindness in poverty-stricken regions of rural north India by the end of the decade.

POPULATION HEALTH INSTITUTE

Research carried out by the Institute on the effects of parental smoking on the respiratory health among children resulted in a Westminster Bill to ban smoking in cars when children are present. The law was changed a year later.

AUBREY LEATHAM

Worked as Head of Cardiology at St George's for 30 years. Recognised all around the world for his pioneering work in cardiac auscultation and pacing, Aubrey successfully implanted the first 'indwelling' pacemaker in the UK and invented the Leatham stethoscope.



ALUMNI

I GRADUATED WITH A DEGREE in Biomedical Science. After graduating in 2012, I completed an MSc in Biochemical Engineering and a PhD where I developed a new method of making 6-Aminocaproic acid (Nylon). I now work as a Manufacturing Development Scientist for a leading biotechnology company.

My degree at St George's really showed its value to me when I combined it with an engineering discipline. There are few people who can understand the complex biology as well as the engineering behind the manufacturing. There is a lot you can do with a Biomedical Science degree, it isn't simply a secondary degree to medicine. I enjoyed my time at St George's and have made lifelong friends because of it.

DAVID JACKSON (GRADUATED 2012)
BIOMEDICAL SCIENCE (BSC HONS)
ST GEORGE'S, UNIVERSITY OF LONDON

I STUDIED BIOMEDICAL SCIENCE at St George's, University of London and graduated in 2014. After graduating I completed a law conversion course and the Legal Practice Course (LPC) where I now work as a Clinical Negligence Paralegal looking toward completing a training contract in medical law.

Working as a paralegal is really varied and fast-paced; the work changes every day. This includes lots of clinical negligence claims, defending NHS trusts from malpractice suits. My work has a real world impact and I get to use my Biomedical Science degree as an understanding of medical terminology and practice is important. It's specialist knowledge, so it's nice to be able to use it.

Don't feel there's only one route as a Biomedical Science graduate. Your degree teaches you lots of transferable skills and there's a huge range of jobs, careers and companies that you can use them in.

KALANI BOGAHALANDE (GRADUATED 2014)
BIOMEDICAL SCIENCE (BSC HONS)
ST GEORGE'S, UNIVERSITY OF LONDON

"St George's not only trained me to become a doctor, it also imbued me with a love and reverence for medicine and the profession."

I GRADUATED IN 1975 from St George's, University of London with a degree in Medicine. I was accepted into Yale University's (USA) Orthopaedic Surgery Residency Program after spending a year as a general surgery resident. Since leaving Yale, I've practised orthopaedic surgery in Connecticut for the last 37 years. I specialise in spinal surgery and spine care within a small multi-specialty group comprised of orthopaedists, neurosurgeons and physiatrists and was recently voted America's Best Doctor by the American Health Council.

My training at St George's was terrific, the best of times. It was as if the hospital and all within existed for us, the students. We had excellent teaching. We were taught to respect our patients and to understand the practice of medicine as a privilege and a responsibility. It was five years later, having completed my residency training to become a consultant, where I learned that being a physician is a commitment to a lifestyle. St George's not only trained me to become a doctor, it also imbued me with a love and reverence for medicine and the profession.

A few years back, I visited the 'new' hospital in Tooting and wandered through the medical school. I was struck by how large and modern the place had become. What hadn't changed was the air of energy and the look of enthusiasm on the faces of the students. How lucky we are to be St George's alumni.

GLENN G TAYLOR M.D.
MEDICINE (GRADUATED 1975)
ST GEORGE'S, UNIVERSITY OF LONDON
AMERICA'S BEST DOCTOR 2017,
AMERICAN HEALTH COUNCIL

OUR FACILITIES

Our facilities are first rate, offering access to state-of-the-art clinical and scientific educational resources.

PARAMEDIC SIMULATION CENTRE

Complete with two fully-fitted rear sections of an ambulance, three purpose-built domicile rooms, a skills lab and an immersion room capable of 270° projections, this space can be adapted to fit any required environment. Students using the facility build their confidence, flexibility and resilience.

LABORATORIES

Our science laboratories are fully fitted with equipment, so that they can be used for biological, chemistry, biomedical, molecular biology and pharmacy practicals. The type of equipment we have includes microscopes, spectrophotometers, PCR machines, organ baths and specialist glassware. We also have audio-visual equipment installed, so that microscope images can be projected on to large screens.

DISSECTION ROOM

The dissection room is where present and future healthcare professionals and scientists in the hospital and university learn or refresh their anatomy knowledge directly from the human body, through access to cadaveric material and models, and plastinated specimens.



FACILITIES

THE PARAMEDIC SIMULATION SUITE is hands-down one of the best elements of the course. There you can practise real-life ambulance scenarios. It really helps to know simple things like where equipment is kept, making the transition from university to placement so much easier and far less daunting.

The simulation suite is incredibly versatile: the mock-up flat can host numerous scenarios and the immersion room really makes you feel like you are in a real situation. For example, in our mental health training, actors came in and we used the immersion room to stage the scenario of talking someone down from a bridge.

The entire simulation suite is used by all year groups of paramedic students. How much you will use it depends on the module you are studying at the time. It is also used for exams and the lecturers host additional evenings that usually involve pizza, actors and new, challenging scenarios!

ELOISA (YEAR 3)
PARAMEDIC SCIENCE (BSC HONS)
ST GEORGE'S, UNIVERSITY OF LONDON

FACILITIES

LIBRARY

Our modern health sciences library offers a wide range of books, e-books and other resources to support you. You will have access to thousands of electronic journals and tools to help you find the articles you need. The Library is open 24 hours a day, seven days a week and comprises of silent, quiet and group learning areas. From last-minute crammers to let's-talk-about-it types, we have a space for you.

PATHOLOGY MUSEUM

Our on-site museum houses a collection of over 2,000 pathological specimens, including a number of original specimens donated by Sir Benjamin Collins Brodie in 1843. This space is used for small group tutorials by students across all of our courses as an educational tool to help them understand the mechanisms of disease.

IT FACILITIES

We have five computer suites housing 260 workstations. Three of these suites are accessible 24 hours a day. It's easy to find a free space with our handy real-time computer locator. We also have 75 self-service laptops available. Free wifi covers the whole campus, including all accommodation. You can use these resources to access your course materials, discussion boards and feedback through our Virtual Learning Environment.



FACILITIES

WORKING IN A HOSPITAL, especially a research hospital like St George's, is hugely beneficial for our learning because you have lots of contact time with professionals from all different areas of the healthcare professions. You can really build your network with people you can refer to, to answer any questions you may have. This is especially useful when arranging further placements or visits to inform future decisions for your career.

HAFSA (YEAR 3)
BIOMEDICAL SCIENCE (BSC HONS)
ST GEORGE'S, UNIVERSITY OF LONDON



THERAPEUTIC RADIOGRAPHY SIMULATION CENTRE

Radiography students access our modern simulation centre throughout their studies to gain experience of operating a radiotherapy treatment room. The immersive environment offers them opportunities to learn to use equipment that is commonly used for radiotherapy treatment, including a linear accelerator. Participating in authentic scenarios, students develop their confidence and skills that are essential to radiotherapy practice, including team-working.

With new treatment planning computers, students learn how to design radiotherapy treatments that will deliver effective radiation doses to the tumour whilst minimising impact to the surrounding healthy organs.

THE ART OF LIVING SUITE

The Art of Living suite is a specifically designed teaching facility for occupational therapy. It has adapted kitchen and bathroom facilities alongside furniture and equipment so that students can practise assessment and intervention skills. We use specialist recording equipment in the suite to provide feedback and to help students develop their interpersonal and communication skills.

THE LIBRARY is very well equipped for whatever you may be studying and learning about. It has plenty of books and journals to help with your studies. It is split into two areas, the quiet group study areas and silent study areas, so you can work with other people or by yourself, depending on how you like to study! There are group study rooms with whiteboards, which are great when you need to prepare for group presentations or exams.

CHRISTOPHER (YEAR 3)
HEALTHCARE SCIENCE (PHYSIOLOGICAL SOCIETY) (BSC HONS)
ST GEORGE'S, UNIVERSITY OF LONDON

STUDENTS' UNION

WITH OVER 120 CLUBS, societies and community projects on offer, and a packed programme of events, there are plenty of opportunities to throw yourself into student life. A spacious bar hosts regular club and band nights, quizzes and sports and film screenings. We also have a games room, a music room, a café, dance studio and several counselling and welfare rooms.

SOCIETIES

Joining societies is a great way to meet other students and pursue a hobby or interest, whether sporting, cultural, political or academic. Whilst being great fun, societies also provide a network across year groups, offering a route to get support from students further on in their courses. A selection of societies, clubs and projects on offer include:

CULTURAL We celebrate diversity at St George's with our cultural societies: Afro-Caribbean Society, Arab, Krishna Consciousness, Pakistan, Afghan, Punjabi, Sri Lanka, Tamil.

FAITH A range of faith-based societies meet regularly: Christian Union, Hindu, Islamic, Jewish, Sikh.

SPORTS CLUBS

Pick up a new hobby or compete in our national and international clubs:

Archery, Badminton, St George's Hospital Boat Club, St George's Firebirds (cheerleading and gymnastics team), Climbing, Cycling and Triathlon, Fencing, Horse Riding, Jiu Jitsu, Karate, Ladies Basketball, Ladies Football, Ladies Hockey, Ladies Rugby, Men's Basketball, Men's Cricket, Men's Football, Men's Hockey, Men's Rugby, Muay Thai Kickboxing, Netball, Pole Fitness, Ski & Snowboarding, Squash, Swimming, Tennis, Yoga.



VISIT THE ST GEORGE'S
STUDENTS' UNION WEBSITE:
SGSU.ORG.UK

STUDENTS' UNION

IF I HAD ONE PIECE OF ADVICE to give new students coming to St George's it would be to try something you have never tried before, whether it be dancing, sports or music. Come to our bhangra classes, try out for the basketball team, audition for one of our renowned shows – you won't regret it!

VIKRAM (PUNJABI SOCIETY)
YEAR 3, BIOMEDICAL SCIENCE (BSC HONS)
ST GEORGE'S, UNIVERSITY OF LONDON

COMMUNITY PROJECTS

Community projects give our students the opportunity to work across national and international communities. Some of our projects have been across the globe, including Machu Picchu, Kilimanjaro, Morocco, China and even Mount Everest. We also run community projects more locally, for example our Teddy Bear Hospital, LINKS (St John Ambulance), Saving Londoners' Lives, UNICEF, SGUL Marrow and many others.

SHOWS

You can get involved every year in some of our award-winning shows. Whether you're a dancer, singer, actor or none of the above, all we need is enthusiasm.

OTHER SOCIETIES

Want to learn to bake? Or to play the guitar? How about learning a new language? We've got you covered:

Art, Bake Soc, Book Club, FAT Soc (Film, Anime & TV), Game, Gin, IFemSoc, Mindfulness, Modern Languages, Music, Photography, Protest & Activism, Radio, 'The Dragon' (student magazine).

THE STUDENTS' UNION BAR

Located on the second floor of Hunter wing, the refurbished bar boasts a new games area, plug points for study, new seating and a large dance floor. It has been redecorated to include a mural about St George's and with images sourced from the Archives that depict the university's history.



ST GEORGE'S, UNIVERSITY OF LONDON is dedicated to transforming the lives of those engaged in our education and preparing them to make a difference in the world. Our single focus on healthcare and science creates a sustainable, collaborative and well-organised environment, giving our students the knowledge, skills and attitudes they need to succeed in their future.

Our close links with local Healthcare Trusts, in particular St George's University Hospitals NHS Foundation Trust, with which we share a campus, means we are in a unique place to give our students a real taste of what their future working lives hold — and the importance of understanding the other professions they will be working with.

VALUES-BASED RECRUITMENT

Our medicine and healthcare courses prepare students to become excellent clinicians. This means first rate clinical and communication skills, excellent knowledge and a grounding in the principles and ethos of the National Health Service. Our values-based recruitment and interdisciplinary training means our students have the right skills and mindset to work effectively in a team and give patients the best care and experiences.





INSTITUTE OF MEDICAL AND BIOMEDICAL EDUCATION

The Institute is the focus of St George's undergraduate and postgraduate medical and biomedical programmes. Created in 2014 to bring a fresh focus to education and educational innovation and development, areas of excellence include interprofessional education, e-learning and our simulation suites for clinical education. Our academic staff come from a range of professional disciplines and are active researchers. They all share a common commitment to our students and strive to ensure the educational experience they receive is second to none.



FACULTY OF HEALTH, SOCIAL CARE AND EDUCATION

Formed in 1996, the Faculty of Health, Social Care and Education is a joint enterprise of St George's, University of London and Kingston University. Our undergraduate St George's programmes include Physiotherapy, Diagnostic Radiography, Therapeutic Radiography, Occupational Therapy and Paramedic Science.

As a dedicated provider of health and social care education, we're proud to be playing a pivotal role in shaping the future workforce for London. Through this partnership, we offer courses in nursing, midwifery, paramedic science, radiography, rehabilitation sciences and social work, as well as a range of workforce development (CPPD) programmes.

We work closely with employers to continually develop our portfolio of courses and our research and enterprise activities. Operating in a climate of continuing change, we have responded proactively and innovatively to new health and social care policy initiatives to deliver programmes that are at the cutting edge of professional development.

VISIT THE FACULTY OF HEALTH, SOCIAL CARE AND EDUCATION WEBSITE TO FIND OUT MORE: HEALTHCARE.AC.UK



BIOMEDICAL SCIENCE (BSC HONS)



LOOKING BACK, I'm so glad I was able to study the Biomedical Science degree before going on to study medicine as I've gained skills and experiences that I would never otherwise have had.

Biomedical Scientists can specialise in one of 11 different areas and therefore have a huge amount of choice when it comes to settling down into a career. It's great if you're still unsure what you want to do with your degree because you gain so many new skills and experiences which open up numerous doors.

I've got to say, I was pleasantly surprised that Biomedical Science at St George's is taught in such a varied and all-encompassing way. I love how we were never in one place for too long.

What's also great about St George's is that it's so close to central London, with great transport links, but none of the hassle of being right in the centre.

HAFSA (YEAR 3)
BIOMEDICAL SCIENCE (BSC HONS)
ST GEORGE'S, UNIVERSITY OF LONDON

 **DURATION: Three years, full time**

 **APPLY THROUGH UCAS CODE: B940, institution code S49**

 **UCAS DEADLINE: 15 January**

 **ACCREDITATION: Institute of Biomedical Science (IBMS) (excluding BSc Clinical Bioscience)**

 **FOR ENTRY REQUIREMENTS VISIT: sgul.ac.uk/biomed**

 **HIGHLIGHTS:**

- Learn anatomy in the dissection room, through demonstrator-led sessions (prosection).
- Shared campus with one of the largest teaching hospitals in the UK, with involvement of clinical staff in teaching, and opportunities for work experience in NHS laboratories.
- An optional integrated Professional Training Year within private industry, research institutions, government bodies or the NHS to further develop your knowledge, practical skills and increase employability.
- Many students progress onto further study in scientific research or medicine.
- Teaching is informed by the latest research and the course is designed to evolve with current practice.
- As part of your intensive final year project you will work with professional research groups, researching into real medical and health problems and learning how biomedical research makes a difference to lives.
- Potential to transfer into our Medicine MBBS (Graduate Entry) course.
- Careers advice embedded into our teaching.

OVERVIEW

Our Biomedical Science BSc is designed to provide you with a broad understanding of the scientific basis of human health and disease, including study, investigation, diagnosis and treatment.

COURSE STRUCTURE

In years one and two, the course covers the fundamental aspects of cell and molecular biology, anatomy, physiology, pharmacology and genetics, and progresses to the investigation of the disease process including diagnosis and treatment.

The programme offers flexibility after year two with the option of an integrated Professional Training Year in a professional setting and a wide range of specialist taught modules available in year three. These progression options give you the opportunity to choose a study pathway leading to a BSc Biomedical Science, BSc Biomedical Science with a specialist degree award title, MSci Biomedical Science or BSc Clinical Bioscience.

The specialist Biomedical Science award titles for the BSc include: Anatomy, Cell & Molecular Biology, Genomics, Global Health, Immunity & Infection, Physiology & Pharmacology, Psychiatry, Behavioural Medicine and Neuroscience. For example, choosing specific options in year three can enable you to graduate with a BSc degree in Biomedical Science with Genomics.

The BSc Clinical Bioscience pathway is for students interested in studying medicine, and includes further anatomy, and clinical and communications skills teaching.

CAREER PROSPECTS

At the end of your studies, you may choose to undertake research within a medical or biomedical science discipline or opt for clinical diagnostic laboratory work, forensic medicine, the pharmaceutical industry, biotechnology, clinical trials co-ordination, biomedical product marketing or technology transfer and product licensing. Many students progress onto further study in scientific research or medicine.





LEARN MORE ABOUT THE COURSE,
MODULES AVAILABLE AND THE STRUCTURE:
SGUL.AC.UK/BIOMED

The background features several detailed, grayscale microscopic illustrations. Label 'b' is at the top left, showing a single elongated, spindle-shaped cell with a textured surface. Label 'c' is at the top center, showing a cluster of several similar spindle-shaped cells. Label 'a' is on the left side, showing a circular cell with a distinct outer ring and a granular interior. Label 'n' is at the bottom left, showing a circular cell with a granular interior. Label 'p' is at the bottom right, showing a large, circular cell with a highly textured, porous interior. A white rectangular box with a thin border is centered horizontally, containing the text 'BIOMEDICAL SCIENCE (MSCI)'.

BIOMEDICAL SCIENCE (MSCI)



I URGE ANYONE thinking about studying Biomedical Science at St George's to just do it! You won't find a course like it in the UK.

On top of being highly scientific, it also offers a great deal of clinical knowledge that makes you a stand-out candidate for any job or course you apply for.

Friends who completed the degree have gone on to secure an amazing array of positions – from NHS lab staff, medicine and drug development to stock analysis and investment banking. Employers really do find graduates who have completed this course very appealing.

The teaching itself is fascinating and fun. Being located inside a hospital offers a unique insight into the disease we're learning about. Our professors would go to the ward and ask patients to come to the lecture and talk about their disease themselves. It really brings it to life rather than just learning from slides.

STANISLAVS


(2017 GRADUATE – CURRENTLY A PHD STUDENT AT ST GEORGE'S)
BIOMEDICAL SCIENCE (MSCI)
ST GEORGE'S, UNIVERSITY OF LONDON

 **DURATION: Four years, full time**

 **APPLY THROUGH UCAS CODE: B942, institution code S49**

 **UCAS DEADLINE: 15 January**

 **ACCREDITATION: Institute of Biomedical Science (IBMS)**

 **FOR ENTRY REQUIREMENTS VISIT: sgul.ac.uk/biomedmsci**

 **HIGHLIGHTS:**

- Shared campus with one of the largest teaching hospitals in the UK, with involvement of clinical staff in teaching, and opportunities for work experience in NHS laboratories.
- An optional integrated Professional Training Year within private industry, research institutions, government bodies or the NHS to further develop your knowledge, practical skills and increase employability.
- Many students progress onto further study in scientific research or medicine.
- Teaching is informed by the latest research and the course is designed to evolve with current practice.
- Learn anatomy through demonstrator-led sessions (prosection).
- As part of your intensive research project you will work with professional research groups researching into real medical and health problems and learning how biomedical research makes a difference to lives.
- Opportunity for final year study in European institutes, as part of the Erasmus scheme.
- Dedicated focus on acquiring first-rate biomedical research skills honed through research project and specific modules.
- Careers advice embedded into our teaching.

OVERVIEW

The Biomedical Science MSci is a continuous, integrated four-year programme, aimed at students interested in science and research, providing enhanced experience and skills transferable to employment or further study, and equipping students to apply for PhD courses or research posts in industry. The generalist research skills gained, in addition to the advanced science, will be advantageous for many non-science careers.

COURSE STRUCTURE

Learning is shared with BSc Biomedical Science students in years one to three, with the addition of modules to develop research skills. A highlight of our course is the extended final year research project, which will help you to develop more advanced practical and research skills that are required for a research career.

CAREER PROSPECTS

The course will equip students with the necessary experience and skills for research, future PhD study, employment in the pharma/biotech industry (drug development, clinical trials) or research funding bodies.





LEARN MORE ABOUT THE COURSE,
MODULES AVAILABLE AND THE STRUCTURE:
SGUL.AC.UK/BIOMEDMSCI

An anatomical drawing of a human torso, showing the internal organs and muscles. The drawing is rendered in a light, sketchy style. On the left side, there are several Latin labels: 'V', 'co', 'pab', 'pa', 'Sc', 'fm', 'pl', and 'Hc'. Each label is followed by a horizontal dashed line that extends across the drawing. In the center of the drawing, there is a white rectangular box with a thin black border containing the text 'CLINICAL PHARMACOLOGY (BSC HONS)'.

CLINICAL PHARMACOLOGY (BSC HONS)




THE ST GEORGE'S undergraduate Clinical Pharmacology course is the first of its kind, involving staff recognised to be leaders in their respective fields. Our goal is to prepare students to be major influences on industrial and academic practice through high-quality teaching delivered through varied methods. Our students will graduate with an awareness of the most up-to-date concepts in Clinical Pharmacology, allied to an array of transferable skills that will equip them well for employment in many areas, especially the NHS, pharmaceutical industry and clinical trials units.

PROFESSOR IAIN GREENWOOD
PROFESSOR OF VASCULAR
PHARMACOLOGY
ST GEORGE'S, UNIVERSITY OF LONDON

 **DURATION: Three years, full time**

 **APPLY THROUGH UCAS: Institution code S49**

 **UCAS DEADLINE: 15 January**

 **FOR ENTRY REQUIREMENTS VISIT:
sgul.ac.uk/clinicalpharmacology**

 **HIGHLIGHTS:**

- The course will use a range of teaching and learning methods including team learning, problem solving, development of a practical and clinical skills portfolio, mixed face-to-face and online delivery and workplace attachments.
- Learn about new treatment modalities such as biological drugs, nanotechnology and gene therapy.
- A great learning environment combining access to laboratory research in the university and clinical research and work in the adjoining NHS hospital.
- Potential employers have advised on the design of the course to make sure that our graduates will be ready for the workplace.
- Personal development and careers advice to help you find your next steps after completing the course.

OVERVIEW

Our BSc in Clinical Pharmacology is designed to provide you with a broad understanding of how drugs are developed, from discovery of molecules to treatment of patients. It will equip you with the knowledge and skills to enter a career in the life sciences, particularly those involved in developing new medicines.

COURSE STRUCTURE

The course is built around four main modules, which will be revisited in each year to tackle topics of increasing complexity. Students will learn how drugs work (pharmacodynamics), how the body handles drugs (pharmacokinetics), how drugs are developed and brought to market (drug development) and how drugs are used in healthcare. The fundamentals of physiology, pathology and genomics essential to understanding clinical pharmacology will be covered. Students will learn about clinical pharmacology by studying key therapeutic topics including cardiovascular disease, infection, immunology and neurological disease.

A key focus of the course is on building skills that will be useful in the workplace. Teaching and learning methods will include: problem-solving laboratory experiments; practical clinical skills workshops; assignments including writing experimental plans (protocols) and reports; data analysis; making presentations; observing the development and use of medicines in industry and healthcare. Your progress in these areas will be documented in a portfolio so you will be able to demonstrate your skills to potential employers.

CAREER PROSPECTS

This course has been designed with advice from a wide range of potential employers including the pharmaceutical industry, contract research organisations, universities and healthcare. It is focused on developing skills required by these employers, as well as on acquiring knowledge. At the end of your studies you will be equipped to start work for these or other employers or go on to further study in scientific research or healthcare.



AL GANGLIA



LEARN MORE ABOUT THE COURSE,
MODULES AVAILABLE AND THE STRUCTURE:
SGUL.AC.UK/CLINICALPHARMACOLOGY



FOR A CAREER IN CLINICAL PHYSIOLOGY

**CARDIAC PHYSIOLOGY
(HEALTHCARE SCIENCE BSC HONS)**

**RESPIRATORY AND SLEEP PHYSIOLOGY
(HEALTHCARE SCIENCE BSC HONS)**



ST GEORGE'S IS UNIQUE in that it's situated within a hospital and caters exclusively to healthcare-related degrees. So all your friends are learning about fairly similar topics which makes it easy to collaborate and discuss your work together.

I chose to study the cardiac physiology specialism because I've always been fascinated by the heart and I find the diagnostic tests incredibly interesting.

One of the best things about this course is that most of your time is spent on placement which is a brilliant opportunity to learn on the job. You're treated as part of a clinical team, which comes with real responsibilities. It's a great way to put your knowledge into practice. It also helps you develop links between the lectures which makes them so much easier to understand and remember.

MARIAM (YEAR 3)
CARDIAC PHYSIOLOGY (HCS BSC HONS)
ST GEORGE'S, UNIVERSITY OF LONDON

I FOUND THE EIGHT-WEEK placement programme in my first year so beneficial. You do four weeks in respiratory and four weeks in cardiology in a hospital environment, which allows you to see how each differs and what's really involved. It's a great way to help you decide which one you'd prefer to specialise in for the next two years.

I was amazed at how much experience and knowledge I gained from it. I learnt a lot during lectures but it was only during my time on placement that I was truly able to understand and consolidate that learning.

There are more placements in your second and third year which help build up your professional experience and exposure within a hospital environment. It's a really effective and engaging way of polishing your specialist skills.


DEREK (YEAR 3)
RESPIRATORY AND SLEEP PHYSIOLOGY
(HCS BSC HONS)
ST GEORGE'S, UNIVERSITY OF LONDON


**CARDIAC PHYSIOLOGY
(HEALTHCARE SCIENCE BSC HONS)
RESPIRATORY AND SLEEP PHYSIOLOGY
(HEALTHCARE SCIENCE BSC HONS)**

 **DURATION: Three years, full time**

 **APPLY THROUGH UCAS CODE: B120,
institution code S49**

 **UCAS DEADLINE: 15 January**

 **ACCREDITATION: Accredited Practitioner
Training Programme. Graduates are
eligible to register with the Registration
Council for Clinical Physiologists (RCCP)
and the National School for Healthcare
Science (NSHCS).**

 **FOR ENTRY REQUIREMENTS VISIT:
sgul.ac.uk/healthcarebsc**

 **HIGHLIGHTS:**

- Specialist teaching delivered by registered clinical physiologists and research-active subject experts.
- 50 weeks spent on clinical placements doing work-based training.
- High levels of patient contact and interaction throughout the course.
- Clinical experience in both Cardiac Physiology and Respiratory/Sleep Physiology during the first year.
- Inter-professional learning in preparation for work within multidisciplinary clinical teams.
- Graduation in either Cardiac or Respiratory/Sleep Physiology.
- Graduates are eligible for professional registration.
- Excellent job prospects (>90% in work or higher study within six months).
- Shared campus with one of the largest teaching hospitals in the UK.

OVERVIEW

Our Healthcare Science course will provide you with the skills and knowledge for a career as a clinical physiologist, either in the cardiac or respiratory/sleep speciality. You will play a vital role in accurate and timely diagnosis, carrying out investigations, interpreting and reporting the results. Clinical physiologists also monitor, manage and treat patients with chronic disease. We are the only course in London accredited to train both Cardiac and Respiratory/Sleep specialists. Students apply for a joint course, experiencing both specialities in academic and clinical settings during their first year, before making an informed decision about their career preference. We also have an Erasmus exchange programme that offers experience working abroad.

COURSE STRUCTURE

Year one is spent largely at St George's, studying a broad curriculum via lectures, tutorials and practicals (including anatomy dissecting room and clinical simulation sessions), and working with students on other healthcare-related courses to lay the foundation for future practice as part of a clinical multidisciplinary team. Over years two and three the curriculum becomes more specialist and focused on the needs of the clinical physiologist. Our cohort sizes are small, allowing for excellent and individualised academic support (even though our Respiratory/Sleep cohort is the largest in the UK). Year three includes a substantial scientific research project.

Fifty weeks of this course are spent in Clinical Workplace Training, starting early in the first year. Our clinical placement sites are NHS hospital departments, largely in London, Surrey, Sussex and Kent. Many are in teaching hospitals and tertiary centres that can offer a wide range of facilities and experiences. Our graduates are therefore immediately ready for the workplace. They have an excellent reputation and excellent employment prospects.

CAREER PROSPECTS

Successful students are eligible to apply for NHS positions up to Band 5 in their chosen field, and for professional registration with both the Academy for Healthcare Science and the Registration Council for Clinical Physiologists. As clinical physiologists, they will become important members of the multidisciplinary teams that provide patient care.





LEARN MORE ABOUT THE COURSE,
MODULES AVAILABLE AND THE STRUCTURE:
SGUL.AC.UK/HEALTHCAREBSC



DIAGNOSTIC RADIOGRAPHY (BSC HONS)

YOU CAN FIND INFORMATION ON THERAPEUTIC RADIOGRAPHY (BSC HONS) ON PAGE 60



ONE OF THE MOST appealing things about St George's is that it offers a multidisciplinary learning environment. It means you also get to know the other professions which helps make you feel really connected to healthcare.

I must admit I was quite surprised by the sheer variety of work you can do within diagnostic radiography. Learning so much about the human body and the examination of its functions is what makes the course so engaging.

The teaching of radiography was fascinating but nothing beats being able to practice positioning and imaging for real in our placement at the end of the year. By the time you reach your final year you'll feel confident enough to work by yourself with minimal supervision.

BRIGITTA (YEAR 3)
DIAGNOSTIC RADIOGRAPHY (BSC HONS)
ST GEORGE'S, UNIVERSITY OF LONDON

DURATION: Three years, full time

APPLY THROUGH UCAS CODE: B821, institution code S49

UCAS DEADLINE: 15 January

APPROVED BY: The Society of Radiographers

APPROVED BY: The Health and Care Professions Council (HCPC) for eligibility to apply for registration

THIS COURSE IS AWARDED BY: St George's, University of London and taught by the Department of Radiography in the Faculty of Health, Social Care and Education.

FOR ENTRY REQUIREMENTS VISIT: sgul.ac.uk/radiographyd

HIGHLIGHTS:

- 50% of your time will be spent in a NHS trust on placement as a student radiographer.
- This course is run by the Faculty of Health, Social Care and Education, which is a partnership between St George's, University of London and Kingston University.
- Interprofessional education: Learning opportunities exist for our students to study alongside one another, reflecting the multidisciplinary nature of healthcare workplace environment.
- Our teaching staff have years of experience as radiographers.
- Careers advice is embedded into our teaching.

OVERVIEW

Diagnostic Radiographers use a wide range of sophisticated equipment for different imaging modalities, such as X-ray, ultrasound and CT and MRI scanning, and combine this expertise with high standards of patient care. Our course will provide you with key skills, knowledge and practical experience to efficiently utilise medical images in diagnosing and treating a range of conditions.

COURSE STRUCTURE

You will follow a rigorous education programme in hospitals, where you will acquire broad experience in the diagnosis and assessment of patients who present a variety of problems, disorders and injuries. Substantial emphasis will be placed on clinical reasoning and the evaluation of practice.

In year one you participate in our interprofessional foundation programme at St George's, which introduces you to the biomedical basics underpinning health science, and receive discipline-specific radiography education.

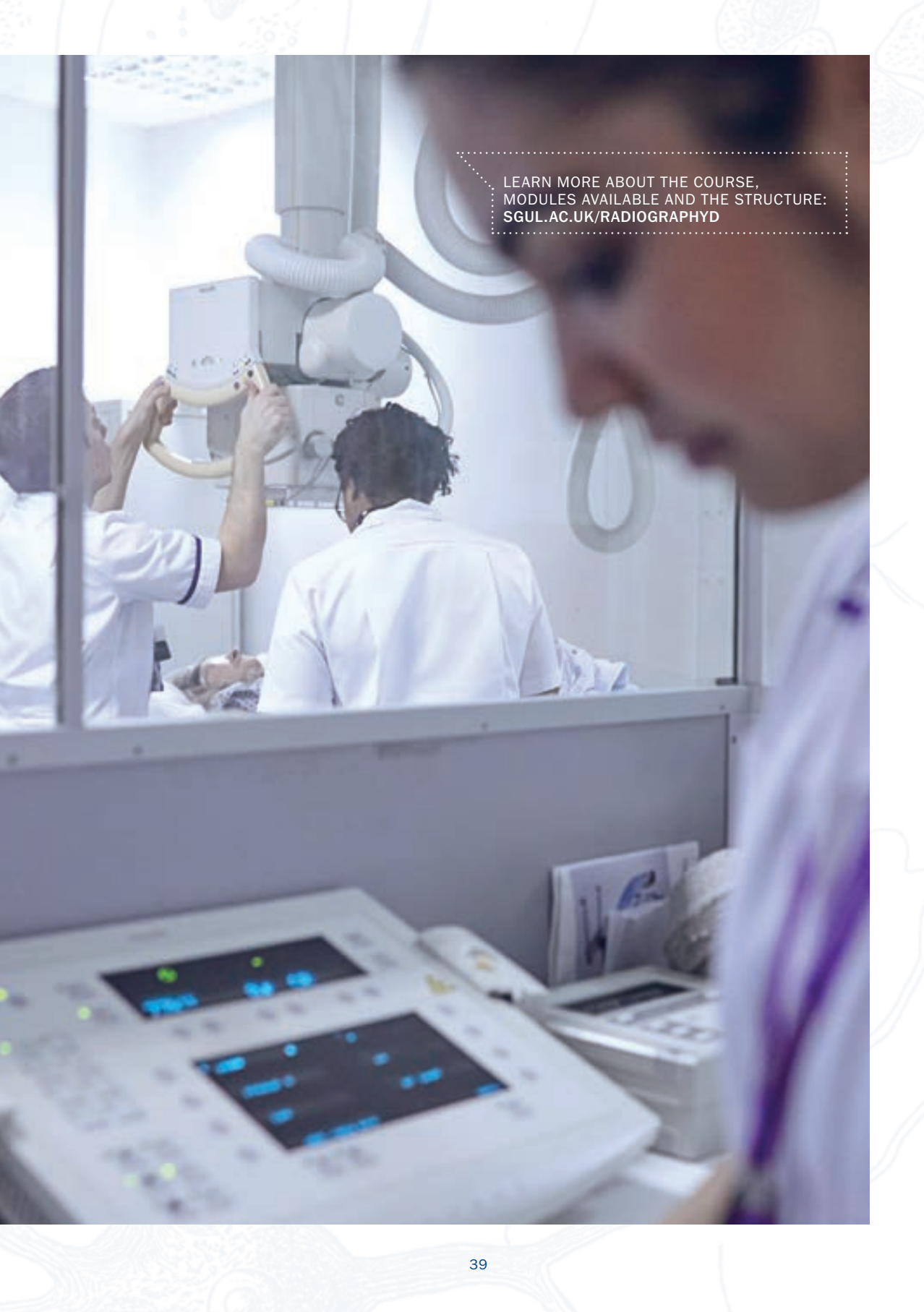
In year two you are introduced to practice and given the opportunity to apply your knowledge and skills in a practice placement setting.

In the final year, the focus is on integrating your knowledge and practice skills. You will develop skills of critically evaluating your radiographic practice for your future career. You also complete a research project on a radiography-related topic of your own choice.

CAREER PROSPECTS

Diagnostic Radiography offers a range of career pathways, including clinical specialisation, management, teaching and research. On completion of your undergraduate course of study you can also choose to study at postgraduate certificate, diploma and Masters level for radiography qualifications.





LEARN MORE ABOUT THE COURSE,
MODULES AVAILABLE AND THE STRUCTURE:
SGUL.AC.UK/RADIOGRAPHYD



AT ST GEORGES, you really benefit from problem-based learning in your transition year. It involves a group of students and a facilitator meeting twice a week to discuss a clinical case. I found it a perfect complement to the lectures and clinical teaching. It's very student-led, enabling us to discuss and make decisions about managing our patient which, as students, helps us to work in a team and think like a doctor. Another great way to solidify the physiology and clinical teaching we receive during the course is through the use of cadavers. It's such an effective way to learn anatomy. It makes you appreciate that each body is unique and enables you to see how intricate and well-constructed the human body really is. Plus you're often able to actually see the change that takes place in various organs when they're affected by disease which is invaluable.

JOZEL (YEAR 3)
MEDICINE (GRADUATE ENTRY) (MBBS4)
ST GEORGE'S, UNIVERSITY OF LONDON

 **DURATION:** Four years, full time

 **APPLY THROUGH UCAS CODE:** A101, institution code S49

 **UCAS DEADLINE:** 15 October

 **ACCREDITATION:** General Medical Council

 **FOR ENTRY REQUIREMENTS VISIT:** sgul.ac.uk/medicinembbs4

 **HIGHLIGHTS:**

- Learn anatomy in the dissection room, through demonstrator-led sessions (prosection).
- Patient-focused education with a strong emphasis on communicating with patients from a range of backgrounds.
- Shared campus with one of the largest teaching hospitals in the UK.
- Opportunities to undertake student selected component (SSC) of study on areas of interest to you.
- Careers advice embedded into our teaching.
- World-class, research-led and practice-driven teaching.
- Many lecturers are working clinicians.

OVERVIEW

Our Graduate Entry Medicine course offers a great opportunity to applicants who already have a degree but want to pursue a career in medicine. You will be part of a cohort of mature students who have a wide range of experience and skills, making this an exciting and stimulating entry route into the medical profession.

COURSE STRUCTURE

The first year (clinical science year) gives you a thorough understanding of clinical science using problem-based learning. You will also gain some first-hand clinical experience in visits to general practice to give you an insight into the patient journey and the role of multidisciplinary teams.

At the start of year two (T year) you will begin your transition from clinical science to clinical practice. You will undertake three five-week clinical attachments (medicine, general practice and surgery), interspersed with problem-based learning and lectures to consolidate and maximise the learning from your clinical experience.

In your third year (P year) students rotate between 10-week clinical attachments in four specialities (Surgery & Surgical specialities, Medicine & Medical specialities, Paediatrics, Obstetrics & Gynaecology and Neurology & Psychiatry).

In your final year (F year) you will deepen your understanding of different areas of clinical practice through a series of assistantships where you shadow junior doctors to help you understand the role for which you are preparing. In this year you can also arrange to undertake elective study anywhere in the world.

CAREER PROSPECTS

At the end of the course you will receive your MBBS degree, which is a primary medical qualification (PMQ). Holding a PMQ entitles you to provisional registration with the General Medical Council, subject only to its acceptance that there are no fitness to practise concerns.





LEARN MORE ABOUT THE COURSE,
MODULES AVAILABLE AND THE STRUCTURE:
SGUL.AC.UK/MEDICINEMBBS4



MEDICINE (MBBS5)



I HONESTLY never realised how ready I would feel to be a doctor after my time at St George's!

In the early years, a combination of lectures, problem-based learning and anatomy teaching with cadavers and pro-sections really develops your clinical and communication skills and helps shape you as a professional.

Later, you have the experience of clinical attachments all across southern England, in every speciality, which fully prepares you to become a doctor in your chosen discipline.

Learning from a textbook and lectures is great, but the placements offered by St George's are what makes you a doctor. Interacting with patients who have a whole host of illnesses, you get to use and develop all your skills in the medical, surgical and GP placements. It's amazing how quickly you integrate into the teams and become a key part of ward rounds, surgical theatres and GP consultations.

JAI (YEAR 4)
MEDICINE (MBBS5)
ST GEORGE'S, UNIVERSITY OF LONDON

 **DURATION:** Five years, full time

 **APPLY THROUGH UCAS CODE:** A100, institution code S49

 **UCAS DEADLINE:** 15 October

 **ACCREDITATION:** General Medical Council

 **FOR ENTRY REQUIREMENTS VISIT:** sgul.ac.uk/medicinembbs5

 **HIGHLIGHTS:**

- Shared campus with one of the largest teaching hospitals in the UK.
- Interprofessional education: Learning opportunities exist for our students to study alongside one another, reflecting the multidisciplinary nature of healthcare workplace environment.
- Learn anatomy in the dissection room, through demonstrator-led sessions (prosection).
- Patient-focused education with a strong emphasis on communicating with patients from a range of backgrounds.
- Opportunities to intercalate and extend your knowledge and obtain an iBSc in a variety of subjects.
- Opportunities to undertake student selected component (SSC) of study on areas of interest to you.
- Careers advice embedded into our teaching.
- World-class, research-led and practice-driven teaching.
- Many lecturers are working clinicians.

OVERVIEW

Our five-year Medicine course will equip you with the essential knowledge, understanding, skills and attitudes required to practise medicine competently and professionally in a patient-centred, multidisciplinary environment. As a St George's medical graduate you will begin your career as a confident doctor, bringing scientific excellence to the bedside and reflecting our core values of patient safety, patient-centredness and professionalism. Our alumni go on to excel in a wide range of medical and surgical fields and many return to study as a postgraduate to develop their career further.

COURSE STRUCTURE

The first two years (clinical science years) provide a thorough understanding of clinical science as well as first-hand clinical experience through a range of placements, giving you an insight into the patient journey and the role of multidisciplinary teams.

In year three (T year) you will begin your transition from clinical science to clinical practice. You will undertake three five-week clinical attachments (medicine, general practice and surgery) interspersed with problem-based learning and lectures.

In your fourth year (P year) students rotate between 10-week clinical attachments in four blocks (Surgery & Surgical Specialities, Medicine & Medical Specialities, Paediatrics, Obstetrics & Gynaecology and Neurology & Psychiatry).

In your final year (F year) you will deepen your understanding of different areas of clinical practice through a series of assistantships where you shadow junior doctors to help you to understand the role for which you are preparing.

CAREER PROSPECTS

At the end of the undergraduate course you will receive your MBBS degree, which is a primary medical qualification (PMQ). Holding a PMQ entitles you to provisional registration with the General Medical Council, subject only to its acceptance that there are no fitness to practise concerns.



LEARN MORE ABOUT THE COURSE,
MODULES AVAILABLE AND THE STRUCTURE:
SGUL.AC.UK/MEDICINEMBBS5





OCCUPATIONAL THERAPY (BSC HONS)



TRAINING WITHIN a hospital is just amazing. You get to learn and train alongside student and professional medics, physiotherapists, radiographers and many other key disciplines. It's just so stimulating and exciting.

From the second you walk through the door, the staff at St George's are incredibly supportive and encouraging at every step of the way throughout your learning experience. Our class bonded really well and we have a lot of fun as well as being there to provide support for each other.

I'll never forget my second day of Induction Week! We were taken to the dissection room to study and handle a cadaver as part of our anatomy lecture. It was honestly one of the most amazing things I've ever experienced. I felt truly honoured to have the opportunity to study anatomy in this way.


SHARON (YEAR 1)
OCCUPATIONAL THERAPY (BSC HONS)
ST GEORGE'S, UNIVERSITY OF LONDON

 **DURATION: Three years, full time**

 **APPLY THROUGH UCAS CODE: B920, institution code S49**

 **UCAS DEADLINE: 15 January**

 **ACCREDITATION: The Health and Care Professions Council (HCPC)**

 **FOR ENTRY REQUIREMENTS VISIT: sgul.ac.uk/occupationaltherapy**

 **HIGHLIGHTS:**

- Shared campus with one of the largest teaching hospitals in the UK.
- Learn from Occupational Therapists with skills in a diverse range of education, research and practise areas.
- Modern teaching facilities enable students to practice and develop practical skills in simulated environments to prepare for practice placements.
- There are well-established Allied Health Professional education programmes already running at St George's, including physiotherapy, radiography and paramedic science, which provides unique opportunities for inter-professional education and debates preparing students to work in multidisciplinary health and social care teams.
- Established links with local NHS and social care organisations enhance prospects for graduating students seeking work in the local area.

OVERVIEW

Occupational Therapists focus on helping their clients participate in the roles and activities they want, despite any challenges faced as a result of injury, illness or disability. Clients may be of all ages, with physical or mental illnesses or learning disabilities.

Occupational Therapists work in a range of settings, including health organisations, social care, housing, education, prisons, employment services, voluntary organisations and in private practice.

By combining theoretical knowledge with practical experience, this course explores concepts, principles and theories of occupational science, human development, anatomy, physiology, sociology and psychology to develop the knowledge and skills to practise as an Occupational Therapist.

COURSE STRUCTURE

Year one is primarily university based, although you will complete your first practice placement. Collaborative inter-professional education with other healthcare students helps you develop invaluable communication and team-building skills.

In year two you will build on your understanding of theoretical concepts and learn skills to provide Occupational Therapy to a variety of clients in physical or mental health services, clients with learning disabilities or children. You will complete two practice placements, providing an opportunity to put theory into practice and develop your skills further.

A comprehensive research project in year three also puts your analytical skills to the test, and you will complete another practice placement where you will work with greater autonomy. You will also produce a problem-based report on an aspect of interdisciplinary practice, a group research project, and a poster related to contemporary Occupational Therapy practice.

CAREER PROSPECTS

As a graduate you will be working in multidisciplinary teams and practising within a variety of settings. This could include work in older people's services, mental health services, social care, children's therapy services or schools, rehabilitation centres, hospitals, housing departments, private practices and others.

Successful completion of this course will make you eligible to apply for registration with the Health and Care Professions Council and become a member of the College of Occupational Therapists (COT).



A photograph showing two women in a clinical or laboratory setting. The woman on the right, with long brown hair and wearing a dark blue t-shirt and a green lanyard, is smiling broadly. She is holding a large, light-colored wooden board that has several white plastic components, including what looks like a stethoscope and some connectors, attached to it. The woman on the left, with dark hair, is also smiling and looking at the board. The background shows a blue wall and a ceiling with recessed lighting. In the top right corner, there is a white dotted-line box containing text.

LEARN MORE ABOUT THE COURSE,
MODULES AVAILABLE AND THE STRUCTURE:
SGUL.AC.UK/OCCUPATIONALTHERAPY



PARAMEDIC SCIENCE (BSC HONS)



ST GEORGE'S doesn't just have incredible facilities, the calibre and passion of the teaching staff is also second to none. The majority of the department work as paramedics with a diverse background of specialisms, so they're all bang up to date on current clinical practice and understand the job that you're training to do. It means they can put us in scenarios they themselves have experienced and can always answer any questions we throw at them.

Placements are brilliant and start within the first six weeks of the course, so right from the start you're in the best place to observe and get hands-on learning.

In the final year there's also the opportunity to do an elective placement and many people choose to go abroad to countries such as South Africa, America, Australia and Ecuador, for an international perspective on pre-hospital emergency medicine.


ELOISA (YEAR 3)
PARAMEDIC SCIENCE (BSC HONS)
ST GEORGE'S, UNIVERSITY OF LONDON

 **DURATION:** Three years, full time

 **APPLY THROUGH UCAS CODE:** B781, institution code S49

 **UCAS DEADLINE:** 15 January

 **ACCREDITATION:** The Health and Care Professions Council (HCPC)

 **THIS COURSE IS AWARDED BY:** St George's, University of London and delivered by the Faculty of Health, Social Care and Education.

 **FOR ENTRY REQUIREMENTS VISIT:** sgul.ac.uk/paramedic

 **HIGHLIGHTS:**

- 1,125 hours spent with the London Ambulance Service.
- 450 hours on placement – spread across hospital wards, theatres, A&E, maternity units, cardiac care units, intensive care units and a variety of community-based placements.
- State-of-the-art paramedic simulation centre comprising of home environments, ambulances and interactive immersive rooms.
- Senior lecturers are working clinicians still undertaking practice.
- Shared campus with one of the largest teaching hospitals in the UK.
- Interprofessional education: Learning opportunities exist for our students to study alongside one another.

OVERVIEW

The BSc in Paramedic Science is designed to develop you into an effective clinician with the capability of responding to, and managing, life-threatening emergency situations from cardiac arrest to multi-system trauma. You will also cover minor illness and injury as managing these types of patient calls, along with chronic conditions and mental health, is the main part of a paramedic's workload. The programme will train you in out-of-hospital care, mental health, social needs, maternity, chronic conditions, pharmacology and trauma.

COURSE STRUCTURE

The degree combines learning in the workplace and academic study. Half of your course is spent between the UK's busiest Ambulance Trust and/or the other practice placements, and half is spent in the university setting, with access to our state-of-the-art simulation centre.

Work-based placements across London are interspersed throughout the three years. These elements tend to be in blocks and you will be required to attend shifts alongside your Practice Educator's working pattern, which will mean undertaking shifts, day and night, any day of the week. These help you link the theoretical knowledge with your practical experiences, so you learn how best to deliver patient care.

CAREER PROSPECTS

Paramedic careers are hugely rewarding. Graduates can now work in a variety of environments, including traditional 999 ambulance services, GP practices, walk-in centres, minor injuries units, helicopter emergency services, research establishments and remote environments, such as oil-rigs. While the NHS employs the majority of paramedics, some also work in the private sector.

Once enrolled on the course you can apply for student membership of the College of Paramedics, the professional body for paramedics in the UK. This can be upgraded to full membership following graduation and you will be eligible to be considered for registration with the Health and Care Professions Council.





LEARN MORE ABOUT THE COURSE,
MODULES AVAILABLE AND THE STRUCTURE:
[SGUL.AC.UK/PARAMEDIC](https://www.sgul.ac.uk/paramedic)



PHYSIOTHERAPY (BSC HONS)



I CHOSE TO STUDY AT ST GEORGE'S because learning in one of the biggest teaching hospitals puts you at a huge advantage. You're able to get an immediate feel for what working in a hospital environment is like.

The lecturers are all experienced physiotherapists, working in different areas, so you receive a very high level of teaching in all aspects of physiotherapy. Tapping into their experience is a great way to learn.

For me, the most surprising thing about the course was how valuable learning with cadavers proved to be. When you walk into the lab for the first time it's quite a daunting thing but you honestly quickly get used to it and appreciate how lucky you are to not just be learning anatomy from a textbook.

NAOMI (YEAR 1)
PHYSIOTHERAPY (BSC HONS)
ST GEORGE'S, UNIVERSITY OF LONDON


PHYSIOTHERAPY (BSC HONS)


 **DURATION:** Three years, full time

 **APPLY THROUGH UCAS CODE:** B160, institution code S49

 **UCAS DEADLINE:** 15 January

 **ACCREDITATION:** Chartered Society of Physiotherapy, and the Health and Care Professions Council

 **THIS COURSE IS AWARDED BY:** St George's, University of London and provided by the School of Rehabilitation Sciences at the Faculty of Health, Social Care and Education, partnership between St George's and Kingston University.

 **FOR ENTRY REQUIREMENTS VISIT:** sgul.ac.uk/physiotherapy

 **HIGHLIGHTS:**

- Shared campus with one of the largest teaching hospitals in the UK.
- Interprofessional education: Learning opportunities exist for our students to study alongside one another, reflecting the multidisciplinary nature of healthcare workplace environment.
- Learn anatomy in the dissection room, through demonstrator-led sessions (prosection).
- This course is run by the Faculty of Health, Social Care and Education, which is a partnership between St George's, University of London and Kingston University.
- Our teaching staff have years of experience as physiotherapists.
- Careers advice embedded into our teaching.

OVERVIEW

The Physiotherapy BSc programme explores concepts, principles and theories of anatomy, physiology, movement, therapeutic exercise, electro-physical modalities and health promotion. You will leave equipped with the knowledge, understanding and assessment and treatment skills needed to work as an effective and autonomous physiotherapist.

COURSE STRUCTURE

Your first year is primarily university based and includes studying alongside medical, radiography, healthcare science, biomedical science and occupational therapy students. This collaborative interprofessional education helps you develop invaluable communication and team-building skills.

Years two and three combine academic modules and clinical practice based on robust scientific evidence. As you learn to integrate the theory with core practical skills, you also learn how to manage the rehabilitation of patients with the help of our specialist clinicians.

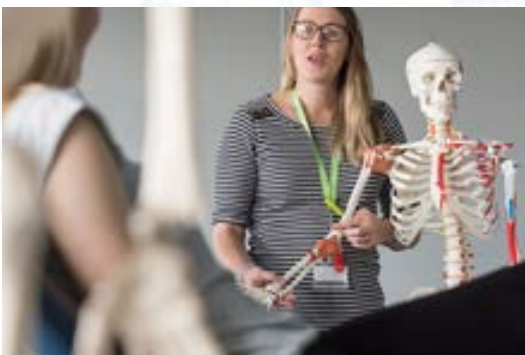
A comprehensive research project in year three also puts your analytical skills to the test, and clinical placements require you to work at high levels of safety, competency and autonomy.

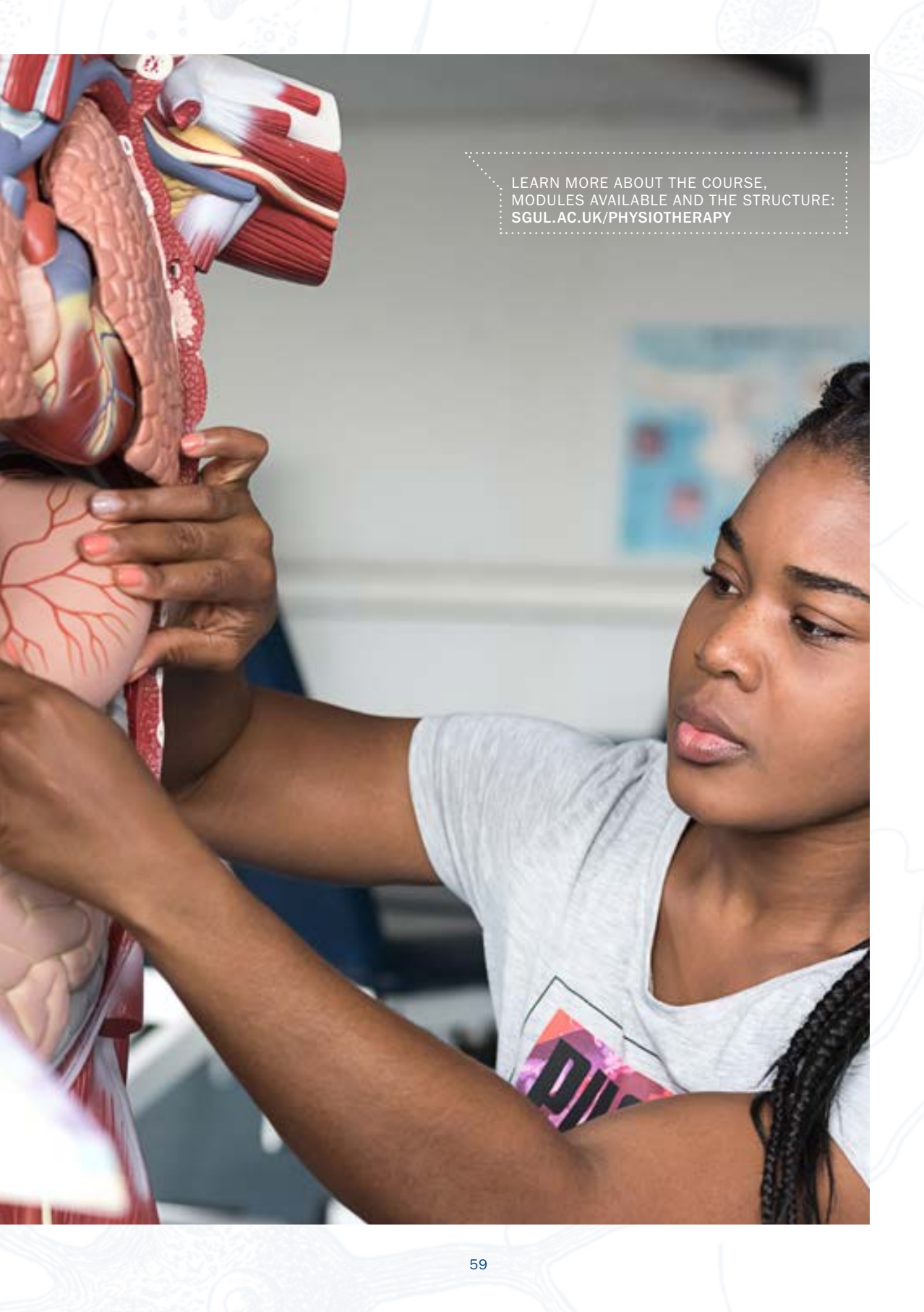
As part of the course you will undertake placements within a variety of healthcare environments, which may include acute NHS hospital trusts, community-based services, mental health trusts and private hospitals. The supervised, hands-on experience you get with patients on placement is the best and only way to consolidate your learning.

You will gain experience in practice in a variety of specialist healthcare areas, including cardiac and respiratory care, neurological rehabilitation and musculoskeletal outpatients.

CAREER PROSPECTS

As a graduate you will be working in multidisciplinary teams to help people of all ages. You will practice within a variety of settings such as: intensive care, mental health, stroke units, rehabilitation centres, sports and leisure facilities. Successful completion of this course will make you eligible to apply for registration with the Health and Care Professions Council and Chartered Society of Physiotherapy.





LEARN MORE ABOUT THE COURSE,
MODULES AVAILABLE AND THE STRUCTURE:
SGUL.AC.UK/PHYSIOTHERAPY



THERAPEUTIC RADIOGRAPHY (BSC HONS)

YOU CAN FIND INFORMATION ON DIAGNOSTIC RADIOGRAPHY (BSC HONS) ON PAGE 36



THE VARIETY of learning at St George's helps make you the best practitioner possible. Traditional lectures prepare you with academic knowledge, group learning sharpens your communication skills and clinical placement properly prepares you for working in a hospital – by giving you the opportunity to actually work in a hospital!

I was genuinely surprised how much I loved cadaveric dissection. Nothing beats learning anatomy on a real human body. It's absolutely invaluable. But the clinical placements are what it's all about. For Radiotherapy, they're located in top hospital departments in and around London.

As well as reinforcing your learning, they offer the opportunity for fantastic and rewarding experiences. It's no exaggeration to say that patient interaction is the greatest part of studying this degree, and that's available in spades. The feeling that you've managed to improve someone's life, to help someone, even fractionally, is just indescribable.


JOSIAH (YEAR 3)
THERAPEUTIC RADIOGRAPHY (BSC HONS)
ST GEORGE'S, UNIVERSITY OF LONDON

THERAPEUTIC RADIOGRAPHY (BSC HONS)


 **DURATION:** Three years, full time

 **APPLY THROUGH UCAS CODE:** B822, institution code S49

 **UCAS DEADLINE:** 15 January

 **APPROVED BY:** The Society of Radiographers

 **APPROVED BY:** The Health and Care Professions Council (HCPC) for eligibility to apply for registration

 **THIS COURSE IS AWARDED BY:** St George's, University of London and taught by the Department of Radiography in the Faculty of Health, Social Care and Education.

 **FOR ENTRY REQUIREMENTS VISIT:** sgul.ac.uk/radiography

 **HIGHLIGHTS:**

- This course is run by the Faculty of Health, Social Care and Education, which is a partnership between St George's, University of London and Kingston University.
- Interprofessional education: Learning opportunities exist for our students to study alongside one another, reflecting the multidisciplinary nature of healthcare workplace environment.
- 50% of your time will be spent in a NHS trust on placement as a student radiographer.
- Our course team has years of experience as radiographers and additional qualifications to support teaching in higher education.
- Careers advice and skills for employability are embedded into our course.

OVERVIEW

The Therapeutic Radiography BSc equips you with the knowledge, technical expertise and care skills needed to plan and deliver radiotherapy treatment to patients with cancer. You will learn how to use advanced radiotherapy equipment and digital technology, such as CT scanners, in a safe and responsible manner. As a result, you will be able to target the tumour with millimetre accuracy to deliver the maximum dose for effective treatment, whilst ensuring minimum impact on healthy tissue.

COURSE STRUCTURE

The therapeutic radiographer works alongside clinical oncologists, physicists and other healthcare professionals in a multidisciplinary oncology team to provide patient-centred care. You will care for patients of different ages, social classes and ethnic backgrounds. It is important that the therapeutic radiographer has both the appropriate caring personality and technical and analytical skills.

Our students benefit from a cutting-edge virtual reality skills lab and an interactive treatment planning system throughout the course to support learning and enhance practical skills. The Virtual Environment for Radiotherapy Training (VERT) creates a three-dimensional treatment suite and offers an interactive function that hones the psychomotor skills required to deliver radiotherapy with pinpoint accuracy.

CAREER PROSPECTS

Therapeutic Radiography qualifications from St George's are internationally recognised. The qualifications offer a range of career opportunities in hospital and other clinical settings, with the opportunity to progress towards clinical specialisation, management, teaching and research careers. Career options in the UK include: treatment planning, treatment delivery, patient support, treatment review and drug prescribing, palliative care, consultant practitioner, quality assurance, management, teaching, research in radiotherapy practice.

On graduation you can register with the Health and Care Professions Council and apply for membership with the Society of Radiographers.





ELEKTA

LEARN MORE ABOUT THE COURSE,
MODULES AVAILABLE AND THE STRUCTURE:
SGUL.AC.UK/RADIOGRAPHYT

IN PARTNERSHIP

UNIVERSITY OF LONDON

St George's is one of the 18 colleges that make up the University of London. It is the only stand-alone medical school within the federation, offering students not only the advantage of a smaller, friendly school but also the benefits of one of the largest and most diverse universities in Britain.

Additionally, as a St George's student you are able to use the enormous resources of the University of London. This will give you access to the Senate House Library, the Careers Library and the Accommodation Office, as well as full use of all the facilities provided by University of London's Student Central.

ST GEORGE'S UNIVERSITY HOSPITALS NHS FOUNDATION TRUST

We share our campus with St George's University Hospitals NHS Foundation Trust, one of the UK's largest teaching hospitals. This means our students learn in a professional healthcare environment from day one. Our partnership with St George's University Hospitals NHS Foundation Trust, along with our strong links with other healthcare providers, offer up-to-the-minute clinical insight that keeps our research and teaching relevant to evolving healthcare needs. Our co-location with the Trust gives our researchers access to a diverse range of patients who participate in clinical trials and are essential to the success of many of our research activities.

COURSES DELIVERED BY THE FACULTY OF HEALTH, SOCIAL CARE AND EDUCATION (AWARDED BY KINGSTON UNIVERSITY)

The Faculty of Health, Social Care and Education is a partnership between St George's and Kingston University. The following courses are delivered by the Faculty and awarded by Kingston University.

MIDWIFERY/REGISTERED MIDWIFE (BSC HONS) SINGLE HONOURS

This three-year course prepares you for a career in midwifery. It is ideal for women and men with good interpersonal skills and empathy, as you'll be providing holistic, personal care to women and their families from all parts of society. The course is based at St George's, a major London teaching hospital, giving you excellent opportunities for personal and professional growth.

For full details see kingston.ac.uk

MIDWIFERY/REGISTERED MIDWIFE (FOR REGISTERED ADULT NURSES) (BSC HONS) SINGLE HONOURS

If you're a registered adult nurse who is planning to change your career to midwifery, we can offer you a shortened course which combines the benefits of excellent teaching, personal support and extensive placement opportunities. You'll also benefit from the unique experience of being based in the stimulating and familiar clinical environment of St George's, a major London teaching hospital.

For full details see kingston.ac.uk

LEARN MORE ABOUT THE
UNIVERSITY OF LONDON AT:
LONDON.AC.UK



**NURSING/REGISTERED NURSE
(ADULT) (BSC HONS) SINGLE HONOURS**

Studying adult nursing will enable you to embark on an exciting career, encompassing a vast array of opportunities at home and abroad in hospitals and the community. You will gain the confidence, knowledge and skills to deliver excellent nursing care, and make a positive difference to the lives of patients and carers you meet.

For full details see kingston.ac.uk

**NURSING/REGISTERED NURSE
(CHILDREN'S NURSING) (BSC HONS)
SINGLE HONOURS**

Children's nursing involves using specialist knowledge and skills to care for a child or young person (from birth to young adulthood) in partnership with their family, in hospital and community settings. Children's nurses provide individualised care, using knowledge of child development and diverse family dynamics to minimise the impact of illness and promote health for the child and family.

For full details see kingston.ac.uk

**NURSING/REGISTERED NURSE
(LEARNING DISABILITY) (BSC HONS)
SINGLE HONOURS**

This degree is based on the 'Valuing People Now' agenda – the driving force to improve the quality of life for people with a learning disability. Through a combination of practice placements, clinical skills development and theory, this course will give you the skills to improve the health, wellbeing, autonomy, choice and social inclusion of people of all ages who have a learning disability.

For full details see kingston.ac.uk

**NURSING/REGISTERED NURSE
(MENTAL HEALTH) (BSC HONS)
SINGLE HONOURS**

Mental health nursing practice is one of the most interesting and varied clinical specialities within healthcare. It is a profession that firmly places the person at the centre of care. This course prepares you to work in collaboration with service users towards recovery, making it a worthwhile and rewarding career.

For full details see kingston.ac.uk

SOCIAL WORK (BA HONS) SINGLE HONOURS

This exciting and challenging course offers preparation for qualified social work across the range of service users and settings. It offers practice learning, quality teaching, state-of-the-art facilities and strong relationships with local social work agencies, leading to challenging and rewarding practice placements. This course is delivered through both self-funded and employment-based routes.

**WORKING WITH CHILDREN AND YOUNG PEOPLE
(BA HONS) SINGLE HONOURS**

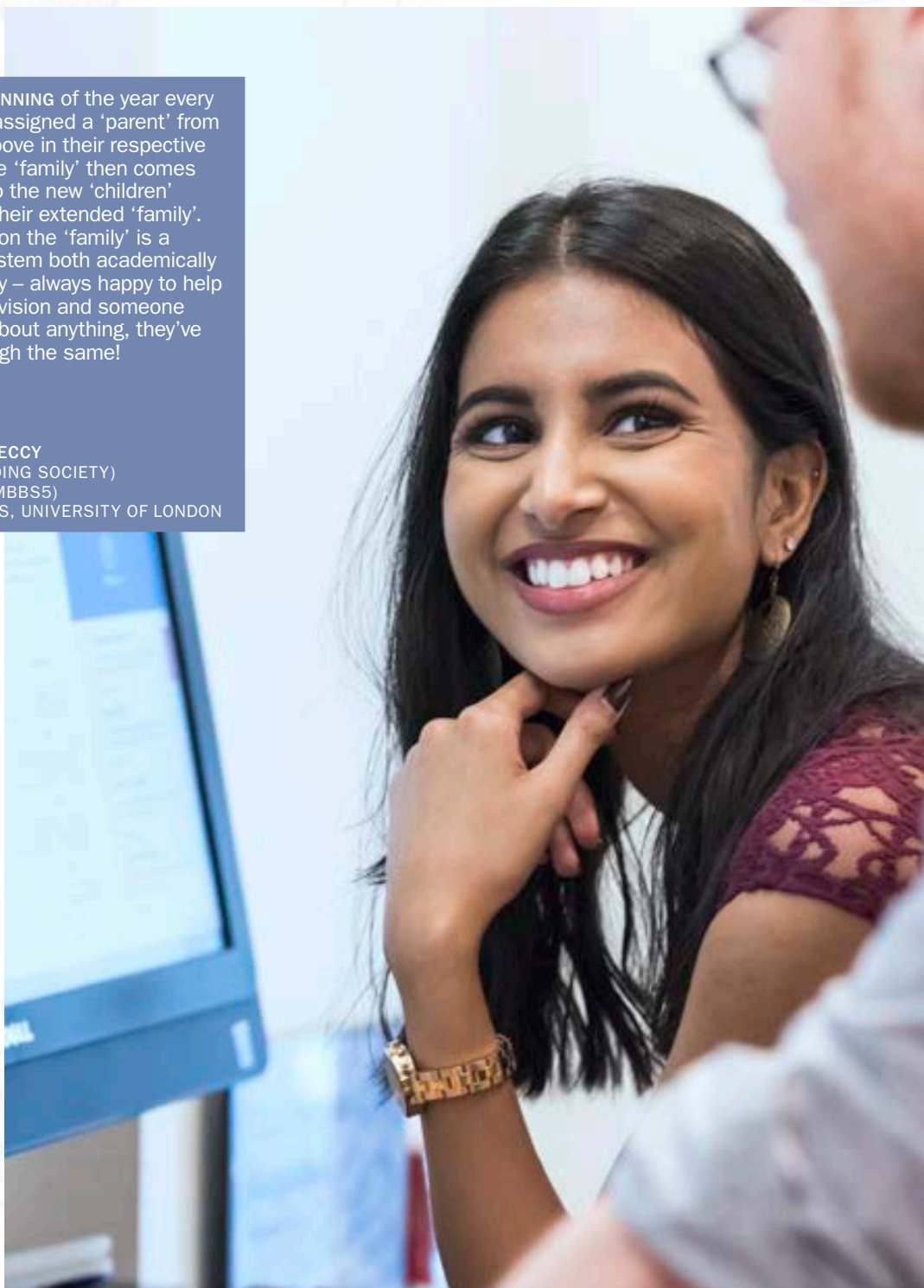
This degree is ideal if you are committed to working with children, young people and their families. It offers a unique course of study, enabling you to investigate which area you are best suited to. When you graduate, you will be well-positioned for careers in social work, social care, early years, nursing, youth justice, teaching or law.



THE ESSENTIALS

AT THE BEGINNING of the year every fresher is assigned a 'parent' from the year above in their respective course. The 'family' then comes together so the new 'children' can meet their extended 'family'. From then on the 'family' is a support system both academically and socially – always happy to help you with revision and someone to talk to about anything, they've been through the same!

NICK AND BECCY
(CHEERLEADING SOCIETY)
MEDICINE (MBBS5)
ST GEORGE'S, UNIVERSITY OF LONDON



FROM DAY ONE you'll be provided with support when you need it. Our Student Centre team can help you with almost any aspect of student life: finances, accommodation, exams and assessment, academic procedures, admissions, international queries, careers, disability and wellbeing, even finding your way around – whatever it takes to make you feel at home.

PERSONAL TUTORS

All students are assigned a personal tutor from their very first day. Your tutor will be an invaluable point of contact and source of academic support throughout your studies.

CAREERS SERVICE

As you study, you should always be looking ahead and part of our job is to look ahead with you. Our careers service works to support current students and recent graduates, and help everyone find and maintain the healthcare or science career of their dreams. We work with careers tutors from each course area to ensure that careers activities specific to your programmes and future profession come to you.

DISABILITY SUPPORT

The disability service is the first point of contact for any student, current or prospective, who is disabled or has a specific learning difficulty such as dyslexia. If you have any questions regarding disability support at St George's, please email disability@sgul.ac.uk

MATURE STUDENT SUPPORT

While the rewards speak for themselves, leaving the world of work to return to the classroom can be daunting. So you might like to know that 70% of our student body is 'mature', i.e. 21 or over when they start, and many have family and caring responsibilities. You won't be alone!

CHAPLAINCY AND FAITH SUPPORT

Many faith communities are represented on campus and there is a multi-faith and quiet contemplation room on site. Pastoral support is available to all who seek it.

ACCOMMODATION

WHEN LOOKING for somewhere to live, you'll find plenty of affordable accommodation options close to the university.

HALLS OF RESIDENCE

Living in halls is a great way to get to know students from across the university. Our main accommodation hub, Horton Halls, offers real value for money, and is among the newest and most competitively priced student accommodation in London. It is less than a mile from St George's and can be reached easily on foot, by bike or by bus.

The halls house 486 students in self-catering single study/bedrooms with en suite facilities. Each study/bedroom is fully furnished and has a telephone and an internet connection. Bedrooms are grouped into apartments, with between three and eight students sharing a well-equipped kitchen and dining area.

Horton Halls is wheelchair accessible and we provide for students with other disabilities or special needs. If you have any medical conditions, a disability or personal circumstances which may have a bearing on your accommodation needs, our accommodation team is here to help you find the right place to stay.

In total, nine accommodation blocks are located round a central courtyard. Each has its own entrance, stairs, lift and vending machines. Utilities, including water, heating and internet access, are included. There are laundry facilities on-site, secure storage for 200 bikes and a secure reception manned 24 hours a day.



TOOTING IS A GREAT PLACE to both live and study. There is enough to do without being in the centre of London. As part of socialising as a Physiotherapy group our cohort has regular nights out for dinner. The choice of restaurants in Tooting makes this really easy after a long day of lectures.

St George's campus has everything you need to both learn and socialise with new friends. All the facilities are in close proximity to each other and it's an easy campus to get to know your way around. Another great part of being a student at St George's is that you can use the joint facilities at Kingston's campus.

NAOMI (YEAR 1)
PHYSIOTHERAPY (BSC HONS)
ST GEORGE'S, UNIVERSITY OF LONDON

MORE INFORMATION ABOUT HORTON
HALLS PLEASE VISIT:
SGUL.AC.UK/ACCOMMODATION

ACCOMMODATION



PRIVATE HOUSING

Many of our students live in private accommodation, and there are a great many reasonably priced rooms, flats, maisonettes and houses available in and around Tooting. Shared flats and houses are often passed from student group to student group within the St George's community. Most of our students end up living within a 15–20 minute walk of the university.

HOUSING ADVICE AND SUPPORT

A Student Accommodation Advisor is on hand with help and advice, whether you're staying in Halls or a private flat. We also work very closely with the University of London Housing Services (ULHS), which maintains lists of registered private landlords and private halls of residence, and operates a contact list for students offering or wanting somewhere to live. ULHS also assists with tenancy agreements, and deposit and rent queries. Please email accommodation@sgul.ac.uk for more information, or with any questions you might have.

Find out more: housing.london.ac.uk



APPLYING

CHECK THE ENTRY REQUIREMENTS

Our courses are academically demanding and we look for strong exam results. As well as A levels, Baccalaureate and Access Diplomas we also consider a range of other qualifications. Our website has full, up-to-date information on all the entry requirements for each of our courses. For UK/EU entry, the following UCAS application deadlines apply:

Medicine courses	15 October
All other undergraduate courses	15 January

INTERVIEWS

We conduct interviews for all our undergraduate courses except Biomedical Science. The majority of our programmes, such as Medicine, Paramedic Science, Physiotherapy and Radiography, conduct Multi Mini Interviews (MMI) which involve candidates completing a series of activities or scenarios rather than one long interview. Prospective students undertake a total of eight five-minute tasks. You might be asked to consider a hypothetical scenario, answer questions, explain your thinking or undertake practical tasks.

The key competencies we are assessing include intellect and a talent for effective learning; empathy; initiative and resilience; insight and integrity; an ability to communicate, organise and solve problems; and the capacity to work well in a team. Healthcare Science interviews are panel style, usually involving two members of staff.

TO FIND OUT MORE ABOUT WHAT HAPPENS ON THE DAY, PLEASE VISIT:
SGUL.AC.UK/HOWTOAPPLY



APPLYING

DISABILITIES

St George's warmly welcomes and supports students who are disabled or have a specific learning difficulty – in fact, we were a partner in the General Medical Council's Gateways project, helping develop guidance to encourage people with disabilities into medicine. Our advisors are here to support any student or potential student who is disabled or has other specific needs.

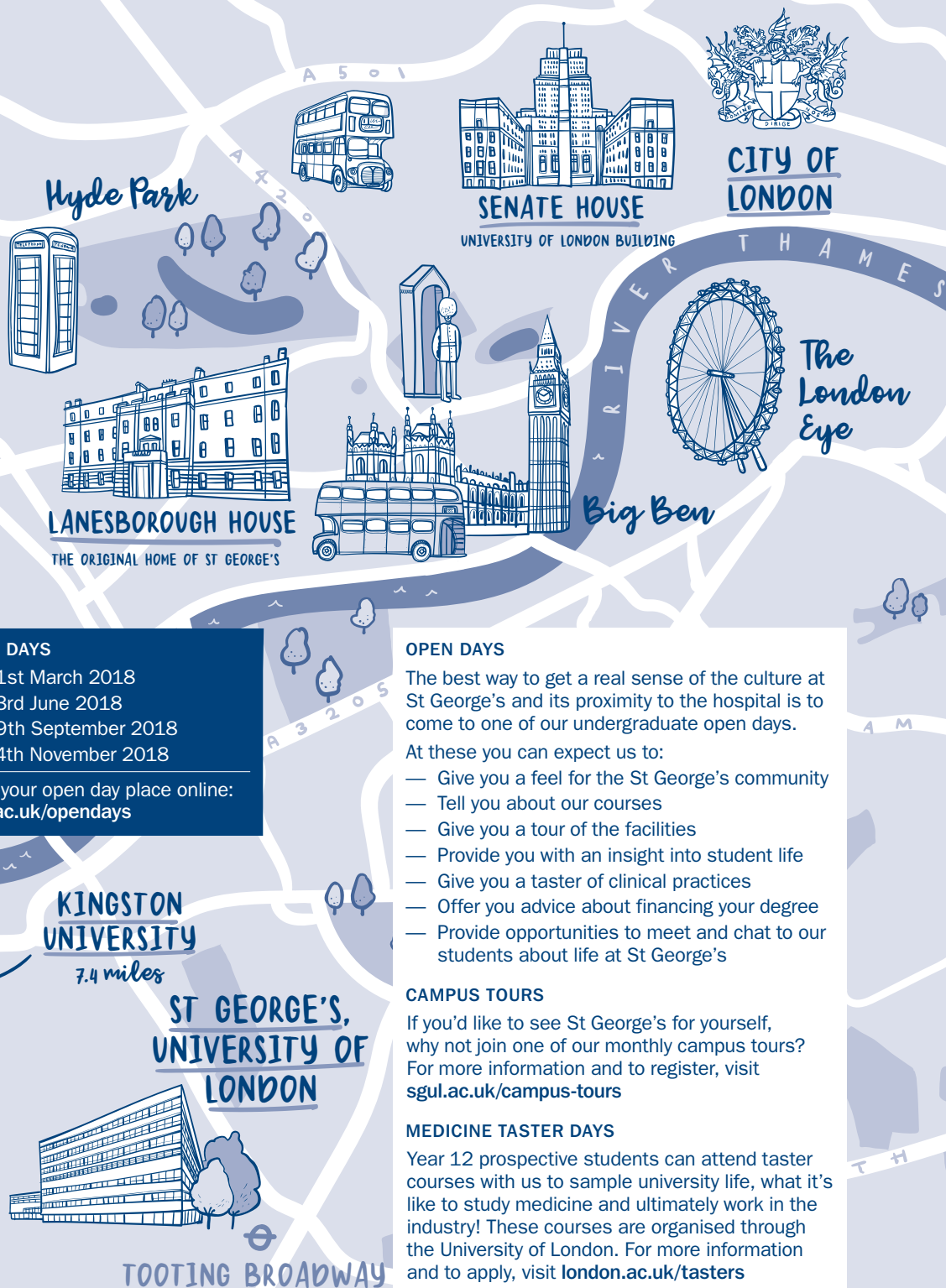
The team includes a specialist tutor to support students with dyslexia and other specific learning disabilities.

ADDITIONAL REQUIREMENTS

All of our applicants (with the exception of Biomedical Science applicants) must meet a range of Fitness to Practise conditions, such as an Enhanced Disclosure and Barring Service (DBS) check and an occupational health (OH) screening, prior to starting their studies. You must be immunised against Hepatitis B and we also recommend immunisation against MMR, Meningitis, TB and Chicken Pox.



VISIT US



OPEN DAYS

- 21st March 2018
- 23rd June 2018
- 29th September 2018
- 24th November 2018

Book your open day place online:
sgul.ac.uk/opendays

OPEN DAYS

The best way to get a real sense of the culture at St George's and its proximity to the hospital is to come to one of our undergraduate open days.

At these you can expect us to:

- Give you a feel for the St George's community
- Tell you about our courses
- Give you a tour of the facilities
- Provide you with an insight into student life
- Give you a taster of clinical practices
- Offer you advice about financing your degree
- Provide opportunities to meet and chat to our students about life at St George's

CAMPUS TOURS

If you'd like to see St George's for yourself, why not join one of our monthly campus tours? For more information and to register, visit sgul.ac.uk/campus-tours

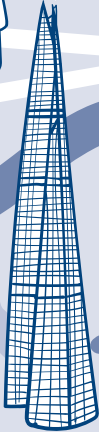
MEDICINE TASTER DAYS

Year 12 prospective students can attend taster courses with us to sample university life, what it's like to study medicine and ultimately work in the industry! These courses are organised through the University of London. For more information and to apply, visit london.ac.uk/tasters

VISIT US



The Shard



St George's, University of London
Cranmer Terrace, London SW17 0RE
Telephone +44 (0)20 3897 2032
Email study@sgul.ac.uk

Design/Copy: mosaiccreates.co.uk
Photography: Laurie Griffiths and David Guttridge
Print: Gemini Press

Courses and University services information: The information about courses and University services in this prospectus is accurate at the time of printing (February 2018). However, courses (and related information), University services and content of this publication remain subject to change.

Course changes may be necessary to reflect changes to practices, current student feedback and changes in staff expertise. Some changes may be the result of circumstances outside of the University's control, such as, but not limited to: accrediting body requirements changing, staff changes or illness, unexpected changes to funding or external policy changes. Once students have accepted a place at the University, the University will endeavour to provide notification at the earliest opportunity of any potential changes to course structure or content or changes to services.

St George's, University of London confirms its commitment to a comprehensive policy of equal opportunities and endeavours to avoid discrimination against any person on the grounds of age, disability, gender, race and ethnicity, religion and belief, sexual orientation, transgender, marriage and civil partnership, pregnancy and maternity statuses. We strive to ensure that all members of the institution behave with courtesy towards each other and that students and staff can work in an atmosphere of mutual respect. We encourage applications from members of groups that are currently under-represented in the field of healthcare.





sgul.ac.uk

    #JoinStGeorges

